

- Typical throughput
- Typical reaction volume
- Dimensions

General

Up to 200 endpoint reactions per hour, up to 170 kinetic reactions per hour.
200µL or less.
36.25"(92.1cm) width, 18.75"(47.6cm) height, 21.5"(54.6cm) depth.
Approximate weight 80 lbs (36Kg).

- Capabilities
- Pumps
- Probes
- Min. and Max. Volume
- Precision for volumes <5µL
- Precision for volumes >5µL
- Maximum number of specimens
- Maximum number of reagents

Reagent and Sample Dispensing

Dilution, pre-dilution, dispensing single or multiple reagents.
Two syringe pumps, sized 50µL and 2.5mL.
316 stainless steel for maximum reagent compatibility, level sensing.
2µL - 1.95mL
<2.5% CV
<1% CV
96 (including calibrators and controls).
Typically 27 to 44 or more (you can program reagents to go in the sample rack; assorted replaceable racks and custom designed racks are available for various bottle sizes).
27 positions, other configurations optional.
Standard microwells, strips or plates.
2L wash with low volume warning sensor.
1L rinse (or second wash) with low volume warning sensor.
2L waste bottle with full sensor.
1L priming bottle.
Drain bottle (not supplied).

- Standard reagent rack
- Reaction vessel
- Instrument bottles

- EIA mode
- Thermal control
- Reagent cooling

Incubating, timing, and temperature control

Incubation timing is software controlled and automatically optimized.
Well, probe, and tubing; ambient or 37°C (other options also available).
RCA, Reagent Cooling Accessory (optional) cools 12° to 15°C below ambient through peltier thermoelectric modules connected to an external controller.

Washing

8-probe, automatic prime and rinse.
Wash protocols are user-programmable for aspirate, dispense, soak, mix.

- Wash head
- Programs

- Optical design

Reading

Reads bichromatic absorbance in 4 channels.
User-selected monochromatic or bichromatic results.
8 position filter wheel: 340, 405, 450, 505, 545, 600, 630, 700, or custom.
long life, hard coat, ion assisted deposition, 10nm typical half bandpass.
0.00 to 3.0A.
± 1% or better, NIST traceable calibration.

- Interference filters
- Linear Range
- Photometer Accuracy

- Format
- Supports
- Minimum system
- Recommended system
- Calculation modes

Software

CD-ROM and internet upgrades.
Windows® 98SE, 2000, NT 4.0, XP, Vista (Computer not supplied).
128 MB RAM, min. 100MB free drive space, serial or USB port.
Windows® XP or Vista, min. 512MB SDRAM, CD drive, USB port.
Absorbance, single standard, factor, fixed time kinetics, kinetics by multipoint, kinetics by standard or factor, multipoint, linear regressions, polynomial, cubic spline, 4-parameter, cutoff by absorbance or standard, and more.
Lamp, bottle volumes, filters, pressure, vacuum, mechanical function, and more.
Store control data, print Levey-Jennings or QC range plots.

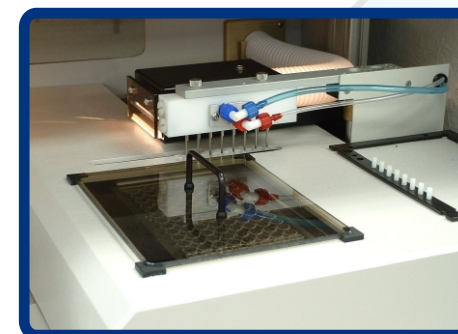
- Self monitoring modes
- QC options

Certifications

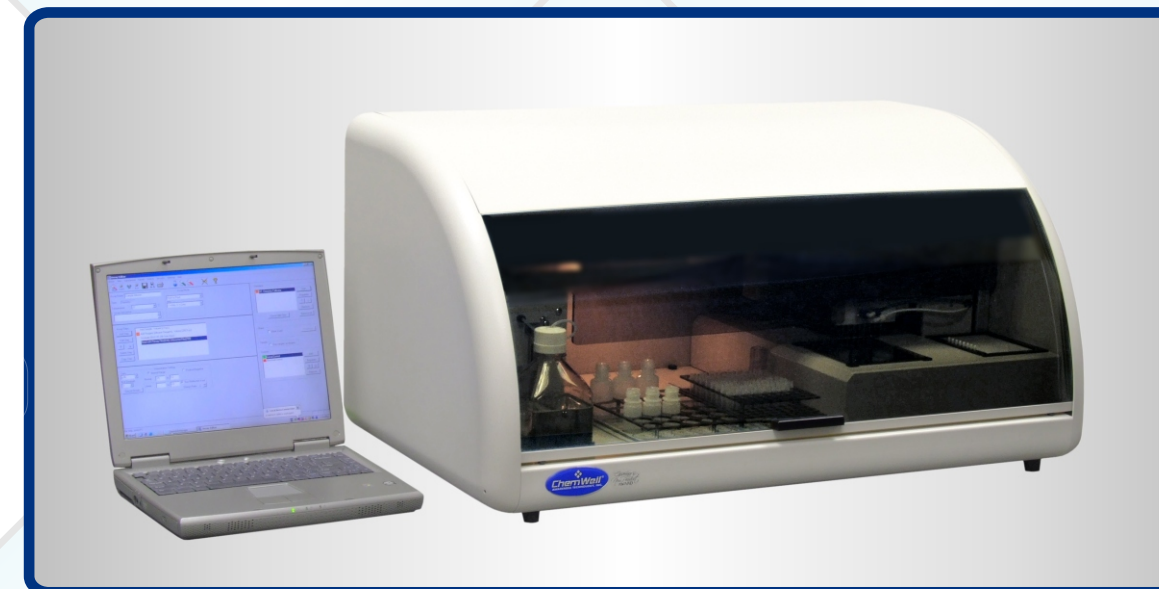
NRTL Listed, CE Marked.
Awareness Technology is certified under ISO 13485:2003.

ChemWell® 2910

Biochemistry and EIA



combined in
one modern
system



Chem❖Well® 2910

For the modern laboratory



An open system you can program for the reagent applications of your choice

Chem❖Well® is a completely open system that is easy to program.

Set up assays, routine jobs, quality control, panels, even index calculations to suit your laboratory. A password system and log of changes protect your programs.

Choose from a large selection of monitoring and reporting styles.

Precise pipetting of low volume specimens, elimination of carry over, and careful control of temperature are all essential for reliable results.

Chem❖Well® can make pre-dilutions, however this is seldom necessary since a high level of precision is achieved even with a 2µL sample. Carryover is eliminated without the need for disposable pipet tips. A unique wash cup assures cleaning inside and out. In addition, extra washes may be programmed for any particularly sensitive assay. With a completely open system you can program additional wash volume, or increase the number of washes, or even direct the probe to pick up and dispense a probe cleaning solution after each specimen.

Chem❖Well® can process EIA's at ambient temperature or 37°C. An incubator is provided for biochemistry wells to assure precise kinetic reactions. The probe is also temperature-controlled to deliver 37°C reagents. An optional reagent cooling accessory (RCA) is available to protect reagents from ambient heat. Removable racks can be refrigerated, pre-loaded and ready for the next use.

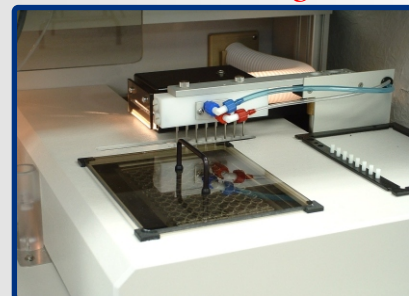
27 reagents, 96 samples



probe washes inside and out



washes 8 wells together



Chem❖Well® is designed and manufactured by Awareness Technology, Inc.
PO Box 1679 Palm City, FL 34991 USA tel 772-283-6540 fax 772-283-8020
email: info@awaretech.com website: <http://www.awaretech.com>
Chem❖Well® is supplied only by qualified, factory-trained distributors.

200 tests
per hour
No carryover
Liquid-sensing
probe tip

8-well
wash head
level-sensing
wash, rinse, and
waste bottles
LIS

STAT
QC tracking
self-monitoring
reflex testing
open
system

Reaction
volume < 250µL
**No custom
disposables**
IAD filters

220 or
110 VAC
input
safety shields
removable
racks

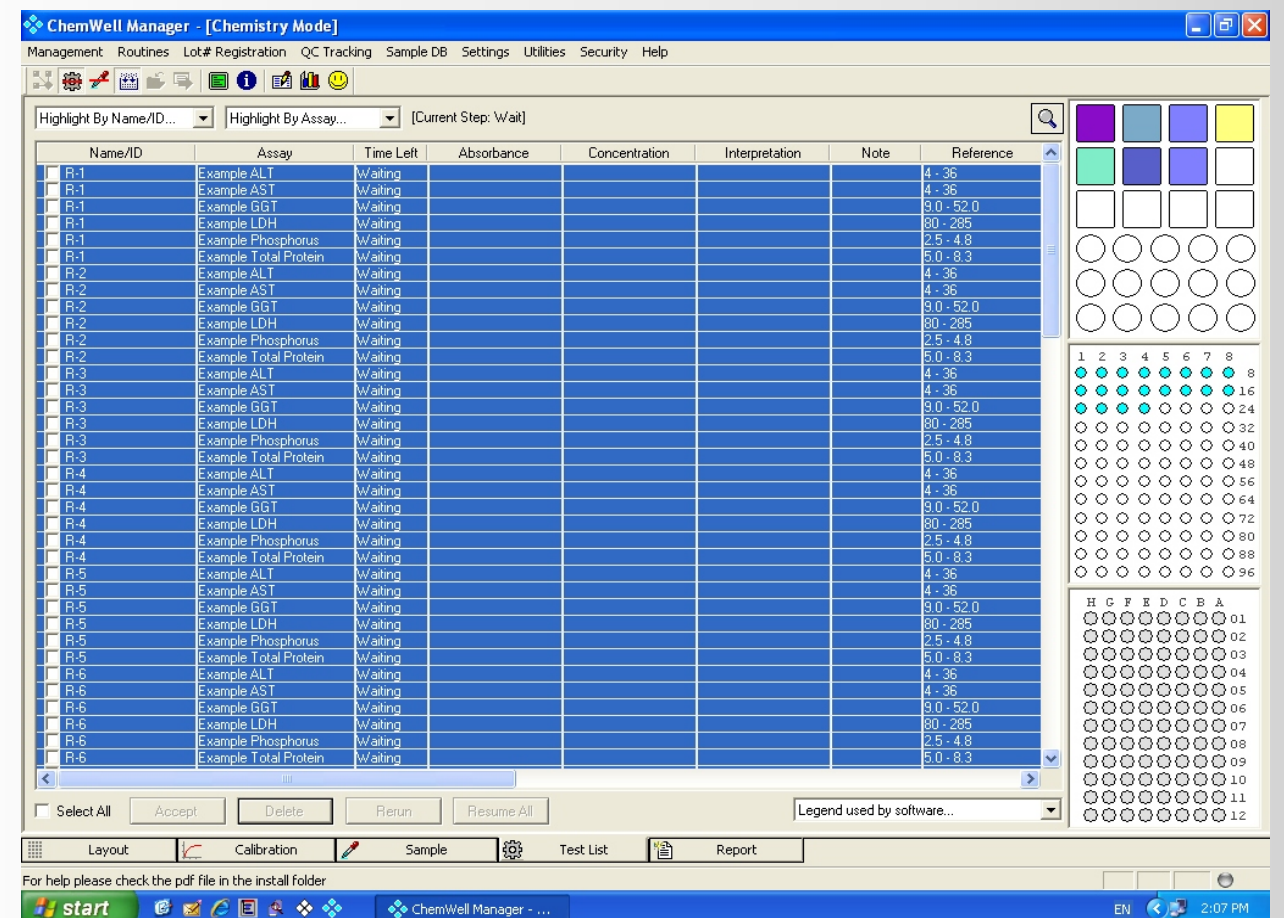
easy to
maintain
makes automatic
service reports
low cost
lamps

Edit
standard
curves
self-monitoring
mechanics and
optics

Chem❖Well® is truly two instruments in one.

Set up a full or partial plate of enzyme immunoassays (EIA) and program Chem❖Well® to automatically make dilutions, dispense reagents, incubate, wash, read, and prepare final reports.

Chem❖Well® uses uncoated microwells to run low-volume samples for biochemistry reactions. Performing biochemistry assays in microwells offers many advantages, among which are increased throughput and decreased cost per test. The wells can also be washed for re-use. You can also program Chem❖Well® as a batch analyzer or a continuous loading random-access analyzer for performing clinical biochemistry tests. Chem❖Well® reads vertically using 4 optical channels and 8 wavelengths.



1. Choose either the chemistry or the EIA mode.
2. Load reagents, samples, and microwells.
3. Select assays and reports you want to see.

THE REST IS AUTOMATIC

Chem❖Well® 2910

For the modern laboratory



Distributore:
Via di Grotte Portella 6/8
00044 Frascati RM
Tel. 06 72632108
Fax 06 72676527